

NOTES: (UNLESS OTHERWISE SPECIFIED)

1. MATERIAL:

METAL 1-2: .5 oz. COPPER  
LAYER 1: ROGERS 4003C, .008 in. THICK  
SOLDERMASK TOP: LPI OR LDI (BLACK)  
SILKSCREEN TOP: WHITE EPOXY INK

2. PLATING:

METAL 1 AND METAL 2: ENIG PER - IPC 4552  
COPPER PLATE SHALL BE .0014 ±.004 FINISH THICKNESS. VIAS WALLS SHALL BE PLATED .0007 MIN.  
NICKEL PLATE (118-236 µin)  
GOLD PLATE (2 - 10 µin)

3. FABRICATE IN ACCORDANCE WITH IPC 6018B, PER IPC 6011 CLASS 3

4. FINISH THICKNESS: (.011 in).

5. TOLERANCE: PCB OUTLINE: ±.0020 in.

6. COPPER IS PULLED BACK .0020 in. ON METAL 1 AND 2 FROM EDGE OF PCB.

7. VIAS UNDER DUT SHALL BE COPPER PLATED FILLED, OVER PLATED AND CO-PLANAR.

8. METAL 1 TOP AND METAL 2 BOT SHALL BE PLANARIZED AFTER PLATING HOLES SHUT.  
MAX ALLOWED NEGATIVE FEATURE .0008. MAX ALLOWED POSITIVE FEATURE .0003.

9. CONDUCTOR WIDTH AND SPACING WITHIN .0010 in. OF CAD DATABASE.

10. SOLDERMASK IN PLATED-THRU HOLES IS ACCEPTABLE AS LONG AS IT DOES EXIST ON THE BACKSIDE.

11. ALL HOLES TO BE LOCATED WITHIN ±.003 in. OF CAD DATABASE.

12. BURRS SHALL NOT EXCEED .0020 in.

13. NO VENDOR MARKING ON SERIALIZATION ALLOWED

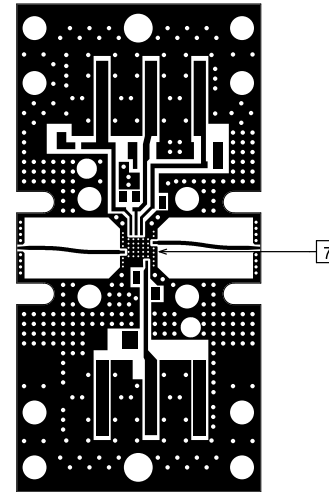
14. BAG AND TAG SEPARATELY.

15. STENCIL:


SOLDER PASTE APPLICATION MACHINE: APS (SPR-20)  
TOLERANCE TO BE ±.001 INCHES.  
SPACING OF CELLS TO BE 1.00 in. APART.  
MATERIAL: STAINLESS STEEL, .005 in. THICK  
MARK PART: TGA2227-SM-V0201A, PCB

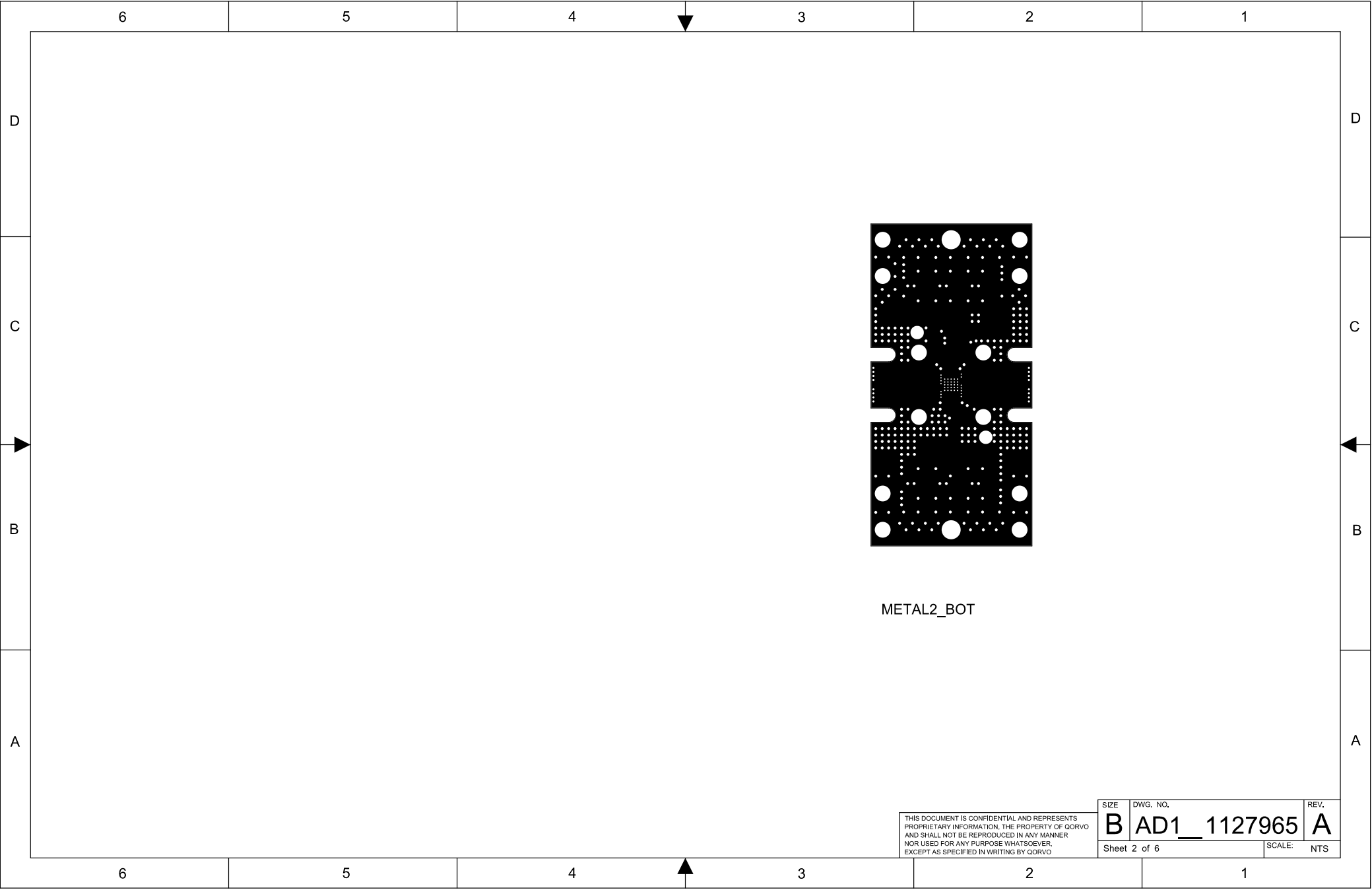
REVISION HISTORY

ECN	REV	DESCRIPTION	DATE	APPROVAL
ECN-0001168	A	NEW RELEASE	05/20/2015	WMISKA



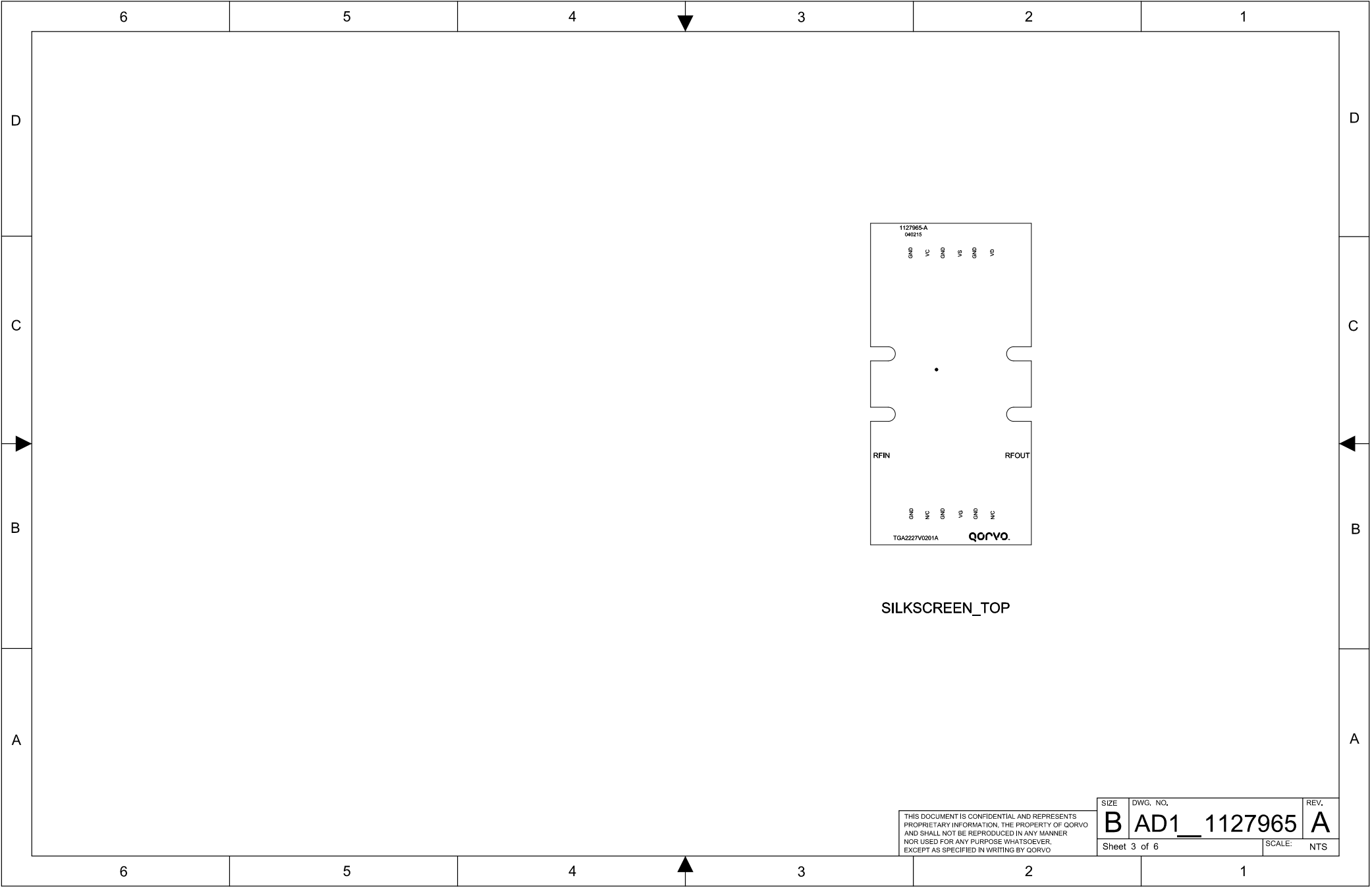
METAL1\_TOP

UNLESS OTHERWISE SPECIFIED: DIMENSIONS ARE IN INCHES [mm]		PRODUCT: TGA2227-SM		 all around you		500 W Renner RD. Richardson, TX 75080 Phone: 972.994.8200 www.qorvo.com	
TOLERANCES ARE: DECIMALS METRIC .XX ± .01 [.XX ± 0.3mm] .XXX ± .005 [.XX ± 0.13mm] .XXXX ± .0010 [.XXX ± .025mm] ANGLES = ±0.5° INTERPRET DRAWING PER ANSI/ASME Y14.5-2009		PROJECT:				APPROVAL AND RELEASE RECORDS MAINTAINED IN PDM	
		DESIGNER		OMARRUFO		4-2-2015	
		ENGR.		QHWANG		4-2-2015	
		MFG.					
		MANAGER		PDM CONTROLLED			
		C.A.					
		CAGE CODE		1CVM1			
		DO NOT SCALE DRAWING					
THIS DOCUMENT IS CONFIDENTIAL AND REPRESENTS PROPRIETARY INFORMATION, THE PROPERTY OF QORVO AND SHALL NOT BE REPRODUCED IN ANY MANNER NOR USED FOR ANY PURPOSE WHATSOEVER, EXCEPT AS SPECIFIED IN WRITING BY QORVO						TITLE: PCB, TGA2227-SM (EHS 4.00x4.00)	
SIZE		DWG. NO.		REV.			
B		AD1_1127965		A			
Sheet 1 of 6		SCALE:		NTS			

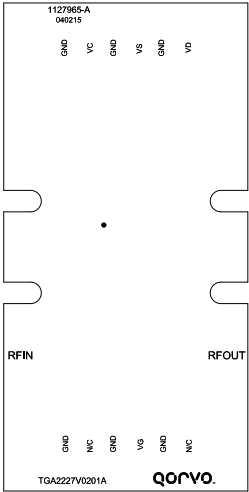


THIS DOCUMENT IS CONFIDENTIAL AND REPRESENTS  
PROPRIETARY INFORMATION, THE PROPERTY OF QORVO  
AND SHALL NOT BE REPRODUCED IN ANY MANNER  
NOR USED FOR ANY PURPOSE WHATSOEVER,  
EXCEPT AS SPECIFIED IN WRITING BY QORVO

SIZE	DWG. NO.	REV.
B	AD1_1127965	A
Sheet 2 of 6		SCALE: NTS

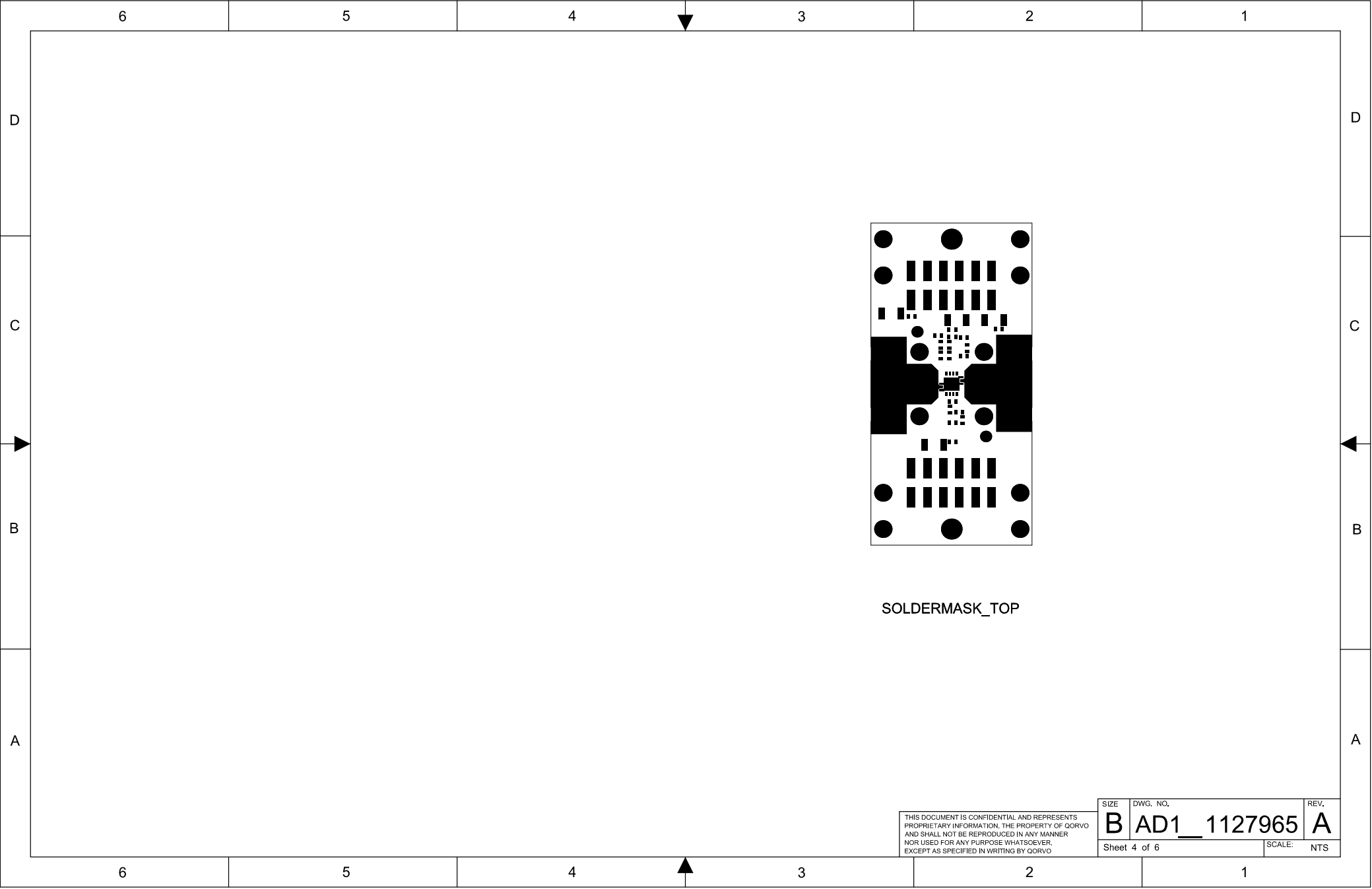


SILKSCREEN\_TOP



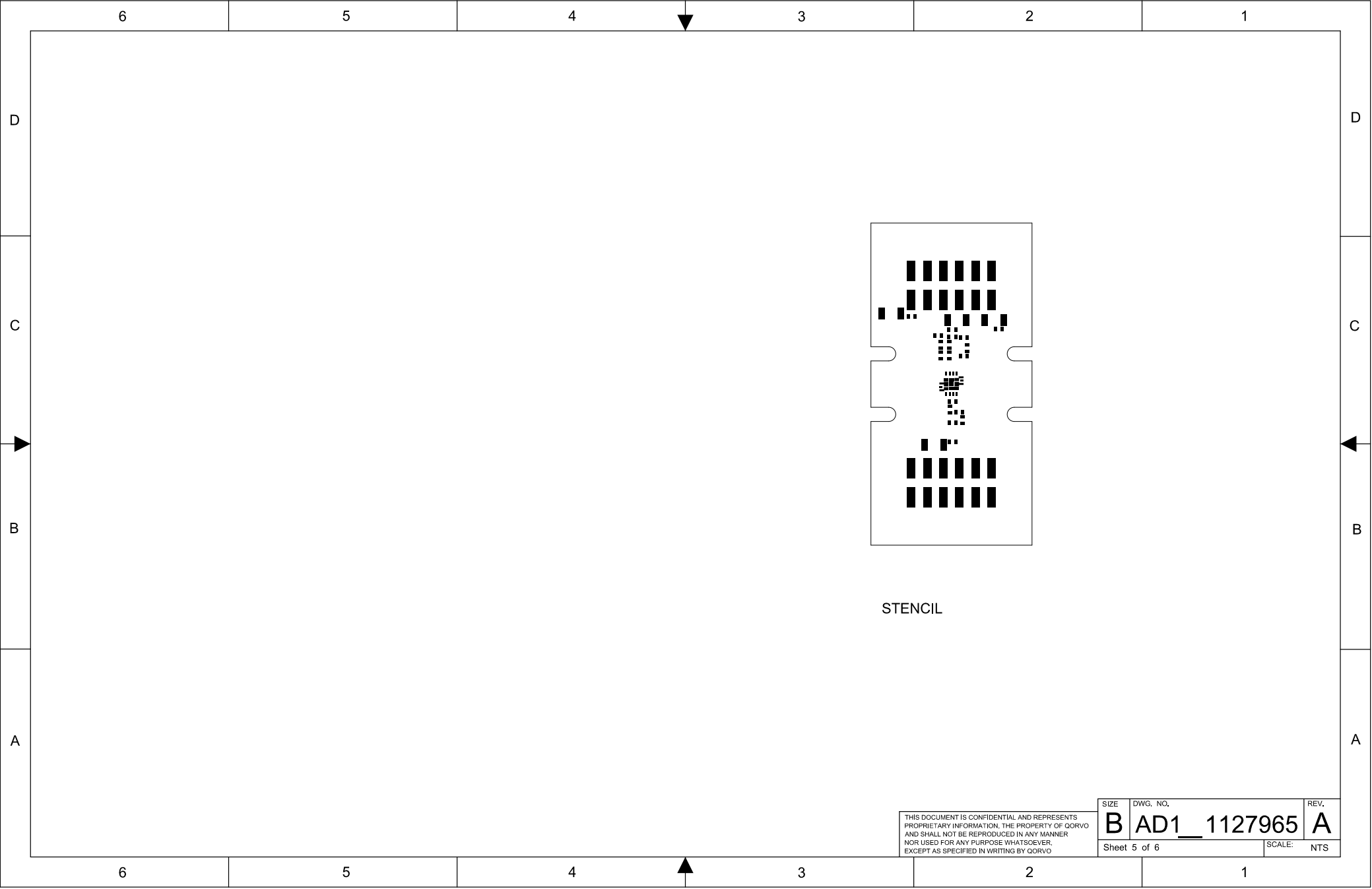
THIS DOCUMENT IS CONFIDENTIAL AND REPRESENTS  
PROPRIETARY INFORMATION, THE PROPERTY OF QORVO  
AND SHALL NOT BE REPRODUCED IN ANY MANNER  
NOR USED FOR ANY PURPOSE WHATSOEVER,  
EXCEPT AS SPECIFIED IN WRITING BY QORVO

SIZE	DWG. NO.	REV.
B	AD1_1127965	A
Sheet 3 of 6		SCALE: NTS



THIS DOCUMENT IS CONFIDENTIAL AND REPRESENTS  
PROPRIETARY INFORMATION, THE PROPERTY OF QORVO  
AND SHALL NOT BE REPRODUCED IN ANY MANNER  
NOR USED FOR ANY PURPOSE WHATSOEVER,  
EXCEPT AS SPECIFIED IN WRITING BY QORVO

SIZE	DWG. NO.	REV.
B	AD1_1127965	A
Sheet 4 of 6		SCALE: NTS



THIS DOCUMENT IS CONFIDENTIAL AND REPRESENTS  
PROPRIETARY INFORMATION, THE PROPERTY OF QORVO  
AND SHALL NOT BE REPRODUCED IN ANY MANNER  
NOR USED FOR ANY PURPOSE WHATSOEVER,  
EXCEPT AS SPECIFIED IN WRITING BY QORVO

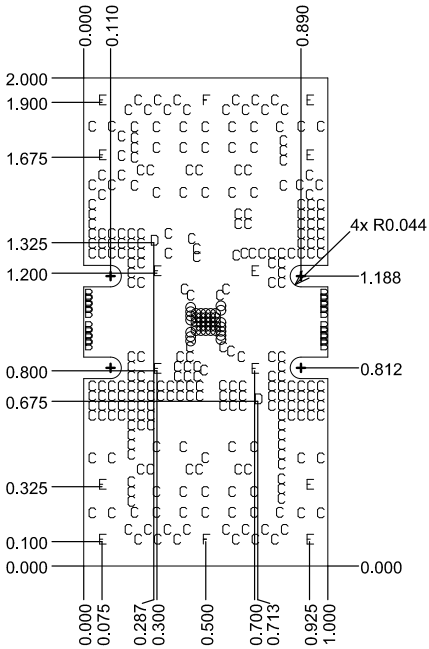
SIZE	DWG. NO.	REV.
B	AD1_1127965	A
Sheet 5 of 6		SCALE: NTS

Layer	Name	Material	Thickness	Constant	Board Layer Stack
1	SILKSCREEN_TOP				
2	SOLDERMASK_TOP	Solder Resist	0.40mil	3.5	
3	METAL1_TOP	Copper	1.40mil		
4	DIELECTRIC 1	ROGERS 4003C	8.00mil	3.38	
5	METAL2_BOT	Copper	1.40mil		

LAYER STACKUP

Symbol	Hit Count	Finished Hole Size	Plated	Hole Type
○	39	10.00mil (0.254mm)	PTH	Round
B	16	15.00mil (0.381mm)	PTH	Round
C	284	20.00mil (0.508mm)	PTH	Round
D	2	63.00mil (1.600mm)	NPTH	Round
E	12	100.00mil (2.540mm)	PTH	Round
F	2	120.00mil (3.048mm)	PTH	Round
	355 Total			

DRILL CHART



THIS DOCUMENT IS CONFIDENTIAL AND REPRESENTS  
PROPRIETARY INFORMATION, THE PROPERTY OF QORVO  
AND SHALL NOT BE REPRODUCED IN ANY MANNER  
NOR USED FOR ANY PURPOSE WHATSOEVER,  
EXCEPT AS SPECIFIED IN WRITING BY QORVO

SIZE	DWG. NO.	REV.
B	AD1_1127965	A
Sheet 6 of 6		SCALE: NTS