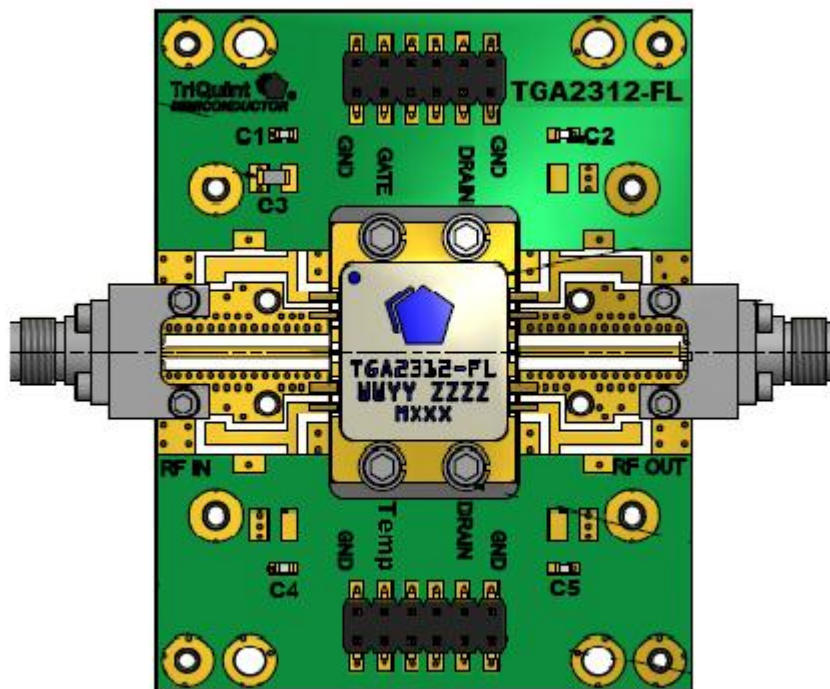


Recommended Board Layout Assembly

Top dielectric material is RO4350 0.020 inch thickness with 0.5 oz. copper.



Bill of Materials

Reference Design	Value	Description	Manufacturer	Part Number
C1	0.01 uF	Cap, 0603, 50V, 10%	Various	
C2, C5	1000 pF	Cap, 0603, 50V, 5%	Various	
C3	1.0 uF	Cap, 1206, 16V, 10%	Various	
C4	100 pF	Cap, 0603, 50V, 5%	Various	